

PRIORI XENON

Economical and practical 120V xenon undercabinet with full length glass lens, high/low switch and full range dimming.

Performance

- Dimmable with standard incandescent dimmers
- Modular design allows flexibility and easy installation
- Low profile housing hides easily – less than 1" high
- Xenon lamps last three times longer than halogen

Construction

- Steel housing with powder coat finish (White and Dark Bronze) or plated finish (Brushed Steel)
- Prismatic tempered glass lens diffuses light
- Magnetic closure secures cover without clips or tabs that can bend or break

Installation

- Mount to underside of shelf or cabinet, at the leading edge, for best performance
- Modular design with hardwire junction boxes, power cords and linking cables sold separately offers maximum flexibility and optimal fixture placement
- Quick release clip provides tool-free access to wiring compartment saving time for hardwire installations
- Captive screw design speeds installation



Specifications

Series	043X
Input voltage	120V AC, 60Hz
Color temperature	2700K
CRI	99+
Wattage	20W / 40W / 60W / 80W
Lumens	See individual product
Maximum run	600 watts
Beam angle	120°
Dimming	Standard incandescent
Housing	Cold rolled steel
Lens	Prismatic tempered glass
Rating	c/UL/us Listed, dry locations
Dimensions	3-3/4"W x 15/16"H x Length
Power input	Hardwire, modular or plug-in
Mounting	Captive screws
Linking	Via 043A linking cables
Lamp type	G8 bi-pin base, 20 watt, 2800K
Rated life	8,000 hrs

Building a System

Determine Layout:

- Determine the quantities and lengths of fixtures needed.
 Determine power input:
1. Hardwire via knockouts
 2. Modular with junction box
 3. Plug-in

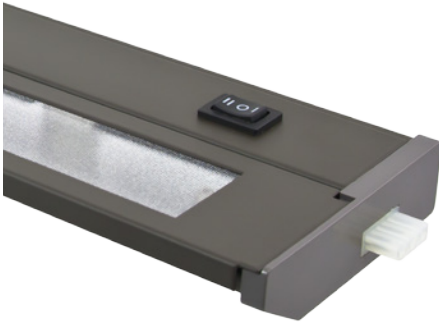
Select Power Input Accessories:

1. Hardwire via knockouts: no additional accessories needed
2. Modular with junction box: use ALC-BOX with 12" jumper
3. Plug-in: use ALC-PC6, one per fixture or one for first fixture and link subsequent

Select Linking Accessories:

1. Direct end-to-end: no additional accessories needed
2. Linking cables: Choose 6", 12", 24" or 36" jumpers (043A linking cables)

Priori Xenon



Priori Xenon - Dark Bronze

043X-1-DB

10-1/4" / 20W / 75Lm

043X-2-DB

14-1/2" / 40W / 155Lm

043X-3-DB

22-1/2" / 60W / 235Lm

043X-4-DB

28-1/2" / 80W / 315Lm



Priori Xenon - Brushed Steel

043X-1-BS

10-1/4" / 20W / 75Lm

043X-2-BS

14-1/2" / 40W / 155Lm

043X-3-BS

22-1/2" / 60W / 235Lm

043X-4-BS

28-1/2" / 80W / 315Lm



Priori Xenon - White

043X-1-WH

10-1/4" / 20W / 82Lm

043X-2-WH

14-1/2" / 40W / 170Lm

043X-3-WH

22-1/2" / 60W / 258Lm

043X-4-WH

28-1/2" / 80W / 346Lm

Priori Xenon Accessories



043J-WH (White)

043J-BR (Bronze)

Hardwire junction box for PRIORI fixtures
7-3/8"L x 2-1/8"W x 1"H
Includes 12" extension and two 3/8" cable connectors
c/UL/us Listed, dry



043A-PC6-WH (White)

043A-PC6-BK (Bronze)

6ft power cord for PRIORI fixtures
120V AC Grounded plug, 3-wire grounded power connector
c/ETL/us Listed, dry



043A-6-EX-WH 6"

043A-12-EX-WH 12"

043A-24-EX-WH 24"

043A-36-EX-WH 36"

Jumper (linking) cables for PRIORI fixtures
c/UL/us Listed, dry



043A-6-EX-WH 6"

043A-12-EX-WH 12"

043A-24-EX-WH 24"

043A-36-EX-WH 36"

Jumper (linking) cables for PRIORI fixtures
c/UL/us Listed, dry



043X-20BP

120V xenon replacement lamp
20 watt bi-pin G8 / 8,000hr rated life
1-3/4" M.O.L.